


Colorado Lodge



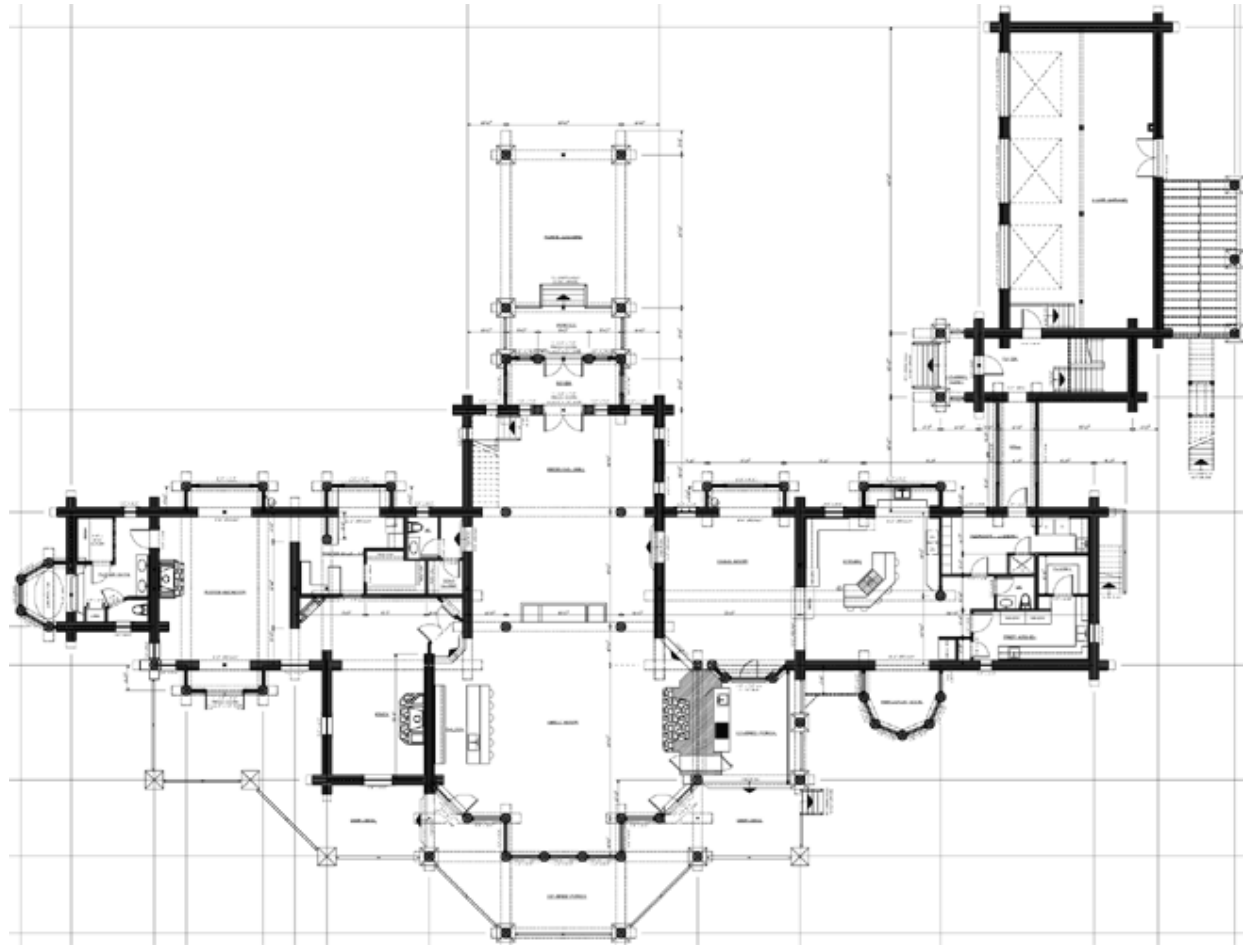
Front Elevation




Back Elevation

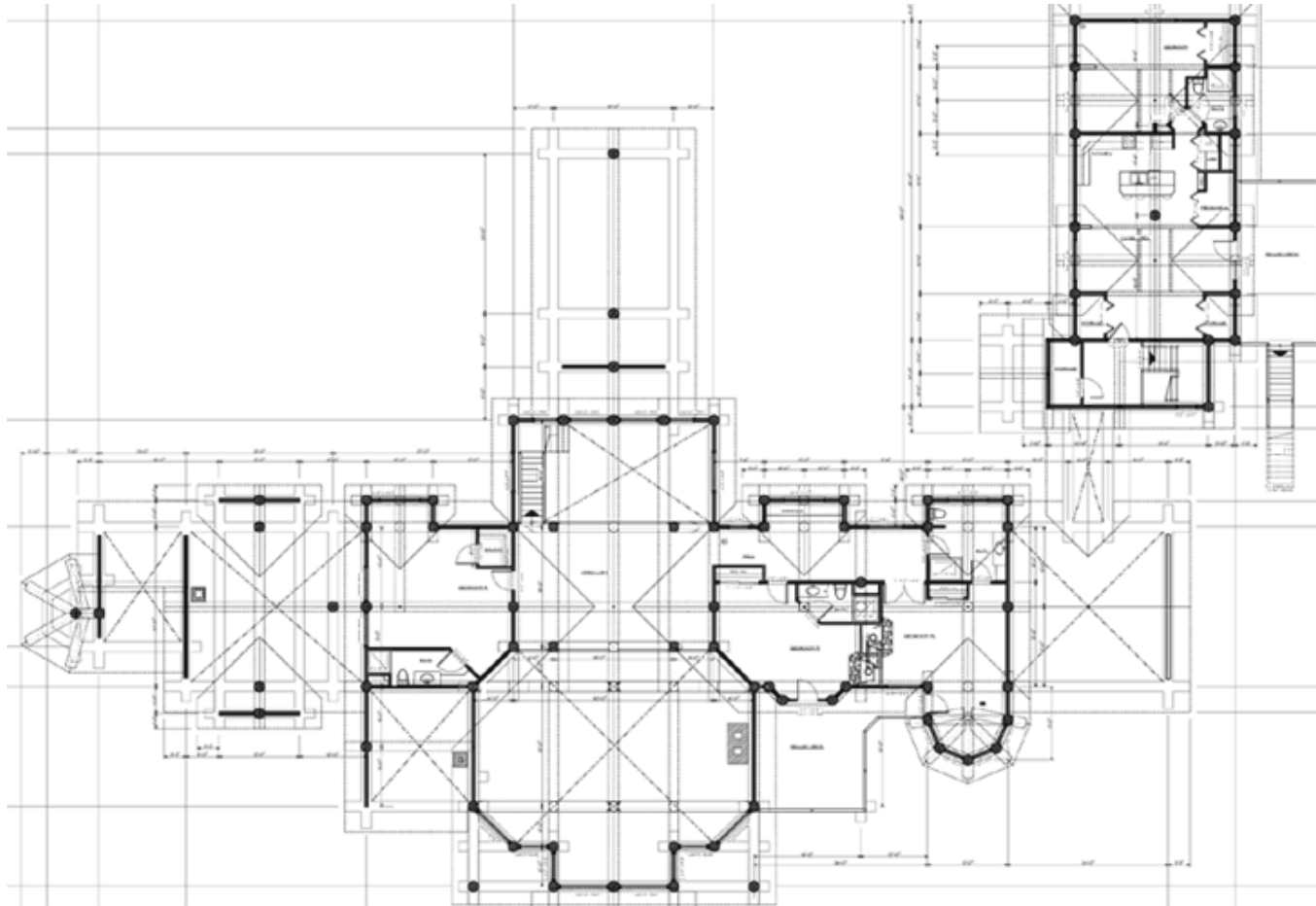
 <p>Cascade Handcrafted Log Homes</p>	Design:	Colorado Lodge	Area:	10,000 sq ft (929 m ²)
	Designed by:	Dirkson Design	Features:	Massive western red Cedar – some flares were 4' dia. at the widest dimension. 40 foot clear span log truss.
	Log Home Construction Style:	Traditional Full Scribe		


Colorado Lodge: Plan of 1st Floor



 <p>Cascade Handcrafted Log Homes</p>	Design:	Colorado Lodge	Area:	10,000 sq ft (929 m ²)
	Designed by:	Dirkson Design	Features:	Massive western red Cedar – some flares were 4' dia. at the widest dimension. 40 foot clear span log truss.
	Log Home Construction Style:	Traditional Full Scribe		

Colorado Lodge: Plan of 2nd Floor



 <p>Cascade Handcrafted Log Homes</p>	Design:	Colorado Lodge	Area:	10,000 sq ft (929 m ²)
	Designed by:	Dirkson Design	Features:	Massive western red Cedar – some flares were 4' dia. at the widest dimension. 40 foot clear span log truss.
	Log Home Construction Style:	Traditional Full Scribe		